



LEGEND

EXISTING

- SITE BOUNDARY
- TREE
To be protected and retained

PROPOSED PLANTINGS

Refer to sheet L303.2, L303.3 - Planting Palette and Schedules

- TREES
- ACCENT FEATURE/ SCULPTURAL PLANTING

MASS PLANTING CHARACTER ZONES

- PL1 POND AND SWALES
- PL2 MODERN BUSH GARDEN
- PL3 FERNERY GARDEN
- PL4 MIXED MASS PLANTING
- PL5 KITCHEN GARDEN
- PL6 SCREEN / HEDGE PLANTINGS

SURFACES HARD

- PAVING TYPE 1 - SAW CUT CONCRETE
- PAVING TYPE 2 - TEXTURED SAW CUT CONCRETE

SURFACES SOFT

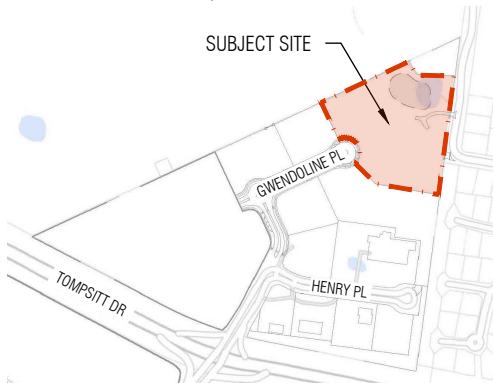
- DECOMPOSED GRANITE GRAVEL
- IRRIGATED GRASS
- MULCH TYPE 1
- MULCH TYPE 2

STRUCTURES AND EQUIPMENT

- RAISED PLANTERS
- PREFABRICATED POTS

GENERAL NOTE: These drawings have been prepared in accordance with relevant Queanbeyan-Palerang Regional Council standards and guidelines, unless indicated otherwise.

KEY PLAN SCALE 1:10,000



NOT FOR CONSTRUCTION

SCALE 1:750@A3

0 2.5 5 10 15 25 37.5m

Copyright and property of Place Logic Pty Ltd - may be used only for the stated project and issue status, and in accordance with terms of engagement for which it was commissioned. To be read in conjunction with all relevant contracts, specifications, reports, drawings and development approval conditions - obtain any outstanding statutory approvals prior to commencement of works. Use figured dimensions - do not scale from drawings. Dimensions are in meters unless noted otherwise.

Place Logic acknowledges Aboriginal and Torres Strait Islander people as the traditional custodians of the land on which we work, and their continuing connection to culture, land and sea. We pay our respects to ancestors and elders past, present and emerging.

REV	DESCRIPTION	DATE	DWN	CHK
A	FOR APPROVAL	30.11.23	HS/MD	AJ
B	FOR APPROVAL	06.12.23	HS/MD	AJ
C	FOR APPROVAL	13.12.23	HS	AJ
D	FOR APPROVAL	18.12.23	HS	AJ
E	FOR APPROVAL	03.02.25	MD	AJ

CLIENT

Arden Jones AILA
QPRC Accredited Landscape Consultant

APDEN JONES

Urban Design |
Landscape Architecture

www.placelogic.com.au
ABN 25 619 179 743

LANDSCAPE PLAN

PROJECT
[23-454] VIKINGS JERRABOMBERRA
37 Tompsitt Drive, Jerrabomberra NSW

ISSUE FOR APPROVAL

REV. E

L301

LANDSCAPE CHARACTER AND MATERIALS



GENERAL CHARACTER: DINING AT POND EDGE & CIRCUIT PATH



CLIMBING PLANTS ON CABLES



SEATING NODE STYLE - FAR SIDE OF POND



POND LANDSCAPE



LUSH FERN GARDENS VISIBLE FROM INSIDE BUILDING



KITCHEN GARDEN



MODERN BUSH GARDENS WITH FIELD STONE PERMEABLE DRIVEWAY PAVING



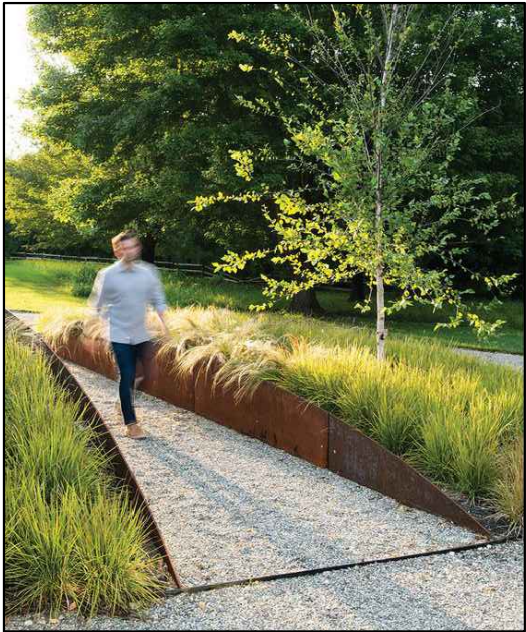
FEATURE PAVING IN BONDED AGGREGATE



STONE CRAZY PAVING



STONE LANDSCAPE AND SIGN WALLS



SCULPTURAL STEEL GARDEN BED EDGES



COLOURED SAWCUT CONCRETE FOOTPATHS THROUGH MOUNDED GARDEN BEDS

GENERAL NOTE: These drawings have been prepared in accordance with relevant Queanbeyan-Palerang Regional Council standards and guidelines, unless indicated otherwise.

NOT FOR CONSTRUCTION

Copyright and property of Place Logic Pty Ltd - may be used only for the stated project and issue status, and in accordance with terms of engagement for which it was commissioned. To be read in conjunction with all relevant contracts, specifications, reports, drawings and development approval conditions - obtain any outstanding statutory approvals prior to commencement of works. Use figured dimensions - do not scale from drawings. Dimensions are in meters unless noted otherwise.
Place Logic acknowledges Aboriginal and Torres Strait Islander people as the traditional custodians of the land on which we work, and their continuing connection to culture, land and sea. We pay our respects to ancestors and elders past, present and emerging.

REV	DESCRIPTION	DATE	DWN	CHK
A	FOR APPROVAL	30.11.23	EC/HS	AJ



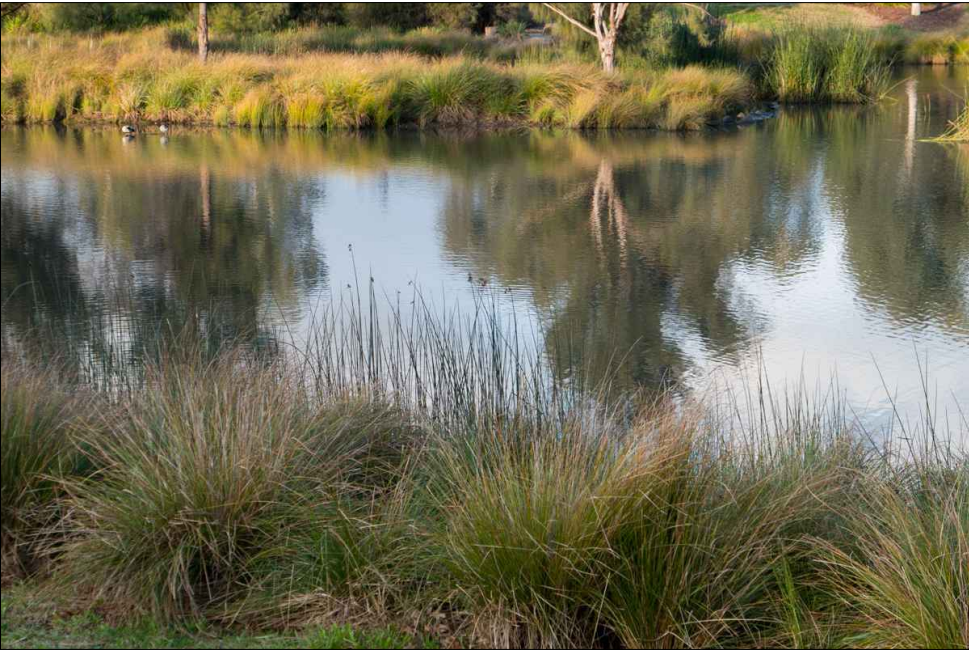
www.placelogic.com.au
ABN 25 619 179 743

PRECEDENTS AND MATERIALS
PALETTES

PROJECT
[23-454] Vikings Jerrabomberra
37 Tomsitt Drive, Jerrabomberra NSW
ISSUE FOR APPROVAL
REV. A
L303.1

PL1

POND AND SWALES - PLANTING SCHEDULE



TREES

ID	Botanical Name	Common name	Pot Size	HxW	Quantity
Csc	Casuarina cunninghamiana	River She-Oak	100L	18-20 x 12-15m	8

SHRUBS AND GROUNDCOVERS

ID	Botanical Name	Common name	Pot Size	HxW	Quantity
Csi	Callistemon sieberi	River Bottlebrush	200mm	6 x 3m	TBC
Adl	Acacia dealbata	Silver Wattle	200mm	6 x 4m	TBC
BSI	Bursaria spinosa subsp.lasiophylla	Hairy Bursaria	200mm	4 x 3m	TBC
Acrb	Acacia rubida	Red-stemmed Wattle	200mm	5 x 4m	TBC
Hap	Chrysocephalum apiculatum	Common Everlasting	140mm	0.1 x 1.0m	TBC

GRASSES AND STRAPPY PLANTS

ID	Botanical Name	Common name	Pot Size	HxW	Quantity
Cpp	Carex appressa	Tall sedge	140mm	0.7 x 0.7m	TBC
Esh	Eleocharis sphacelata	Tall spike rush	140mm	1 x 0.5m	TBC
Fln	Ficinia nodosa	Club Rush	200mm	1 x 1m	TBC
LDI	Lomandra longifolia	Spiny-Headed Mat-Rush	tube	0.3 x 0.3m	TBC
POAI	Poa labillardierei	Tussock Grass	140mm	1.2 x 0.5m	TBC
RYp	Rytidosperma pallidum	Wallaby Grass	140mm	1.8 x 1m	TBC

AQUATIC PLANTS

ID	Botanical Name	Common name	Pot Size	HxW	Quantity
----	----------------	-------------	----------	-----	----------

By Poplars - refer to approved subdivision works drawings (TBC).

PL2

MODERN BUSH GARDEN - PLANTING SCHEDULE



TREES

ID	Botanical Name	Common name	Pot Size	HxW	Quantity
BRp	Brachychiton populneus	Kurrajong Bottle Tree	100L	10 x 10m	3
Csc	Casuarina cunninghamiana	River She-Oak	100L	18-20 x 12-15m	1
Emfl	Eucalyptus mannifera 'Little Spotty'	Dwarf Red Spotted Gum	100L	5 x 5m	6
EPLS	Eucalyptus pauciflora 'Little Snowman'	Dwarf Snowgum	100L	5.0 x 4.0m	6
GLsu	Gleditsia triacanthos 'Sunburst'	Sunburst Honey Loc	100L	9 x 10m	2
PYcc	Pyrus calleryana 'Capital'	Ornamental Pear	100L	11.0 x 3.0m	8
TLA	Tristaniopsis laurina	Kanooka Gum	100L	13.0 x 5.0m	17
Xg	Xanthorrhoea glauca	Grass Tree	200mm	1.5 x 2m	24

SHRUBS AND GROUNDCOVERS

ID	Botanical Name	Common name	Pot Size	HxW	Quantity
Acu	Acacia cultriformis	Knife-Leaf Wattle	200mm	4 x 3m	TBC
BKI	Baeckea linifolia	Heath Myrtle	200mm	2 x 2m	TBC
BNe	Banksia ericifolia	Heath Banksia	200mm	7 x 2.5m	TBC
CRa	Correa alba var. alba	Coastal Correa	200mm	1.5 x 1.5m	TBC
Cgar	Carpobrotus glaucescens 'Aussie Rambler'	Pig Face	140mm	0.2 x 2.0m	TBC
CRaS	Correa alba 'Star Showers'	Dwarf Correa Alba	140mm	0.4 m x 0.5m	TBC
Gjm	Grevillea juniperina 'Molonglo'	Grevillea junipera Molonglo	140mm	0.8 x 3m	TBC
Gla†	Grevillea lanigera 'Mt Tamboritha'	Grevillea lanigera	140mm	0.5 x 1.5m	TBC
Hvm	Hardenbergia violacea 'Meema'	Purple Coral Pea	140mm	0.5 x 2m	TBC
Lcn	Leptospermum continentale	Prickly tea-tree	200mm	2.0 x 2.0m	TBC
MYpf	Myoporum parvifolium 'Fine Leaf Form'	Creeping Boobialla	140mm	0.2 x 3m	TBC
Rh	Rhagodia spinescens	Spiny Saltbush	200mm	1.5 x 4m	TBC
W ff	Westringia fruticosa 'Flat n Fruity'	Flat n Fruity Coastal Rosemary	200mm	0.3 x 1.5m	TBC
W fgb	Westringia fruticosa 'Grey Box'	Grey Box Coastal Rosemary	200mm	0.5 x 0.5m	TBC

GRASSES AND ACCENT PLANTS

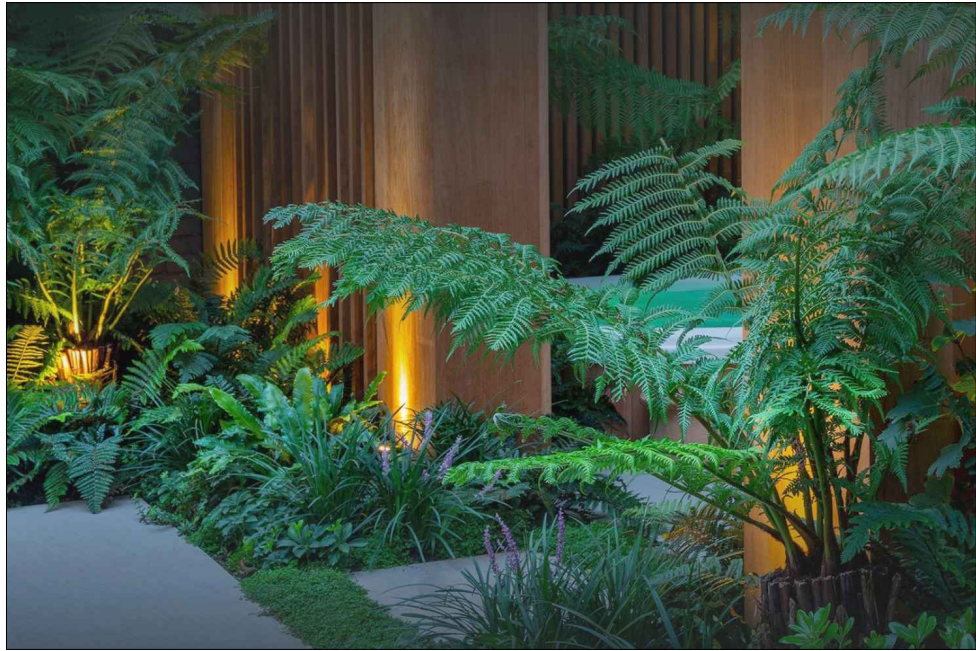
ID	Botanical Name	Common name	Pot Size	HxW	Quantity
Cpp	Carex appressa	Tall sedge	140mm	0.7 x 0.7m	TBC
Esh	Eleocharis sphacelata	Tall spike rush	140mm	1 x 0.5m	TBC
LDI	Lomandra longifolia	Spiny-Headed Mat-Rush	tube	0.3 x 0.3m	TBC
POAI	Poa labillardierei	Tussock Grass	140mm	1.2 x 0.5m	TBC
RYp	Rytidosperma pallidum	Wallaby Grass	140mm	1.8 x 1m	TBC

VERTICAL GREENING

ID	Botanical Name	Common name	Pot Size	HxW	Quantity
HV	Hardenbergia violacea 'Happy W anderer'	Purple Coral Pea	200mm	0.3 x 1.2m	TBC

PL3

FERNERY GARDEN - PLANTING SCHEDULE



TREES

ID	Botanical Name	Common name	Pot Size	HxW	Quantity
CYC	Cyathea cooperi	Australian Tree Fern	100L	6 x 3m	5
DCa	Dicksonia antarctica	Soft Tree Fern	100L	4.5 x 3.5m	3
PYcc	Pyrus calleryana 'Capital'	Ornamental Pear	100L	11.0 x 3.0m	8
Xg	Xanthorrhoea glauca	Grass Tree	200mm	1.5 x 2m	6

SHRUBS AND GROUNDCOVERS

ID	Botanical Name	Common name	Pot Size	HxW	Quantity
Asn	Asplenium nidus	Bird's Nest Fern	200mm	1 x 1.5m	TBC
BGsl	Blechnum gibbum 'Silver Lady'	Silver Lady Fern	200mm	1.0 x 1.0m	TBC
Cre	Cycas revoluta	Sago Palm	300mm	1.2 x 1.2m	TBC
Doe	Doryanthes excelsa	Gynea Lily	140mm	2.0 x 2.0m	TBC
Hn	Helleborus niger	Black Lenten Rose	140mm	0.3 x 0.4m	TBC
Hpl	Hosta plantaginea	Plantain Lily	200mm	0.8 x 1m	TBC
Hqu	Hydrangea quercifolia	Oak Leaf Hydrangea	200mm	2.5 x 2.5m	TBC
SCb	Scleranthus biflorus	Emerald Cushion	140mm	0.15 x 0.8m	TBC
Taf	Trachelospermum asiaticum 'Flat Mat'	Flat Mat Asiatic Jasmine	140mm	0.4 x 3m	TBC
Vlh	Viola hederacea	Native Violet	140mm	0.1 x 0.2m	TBC

GRASSES AND STRAPPY PLANTS

ID	Botanical Name	Common name	Pot Size	HxW	Quantity
Dta	Dianella Tasred'	Variegated Paroo Lily	140mm	0.55 x 0.65m	TBC
Leg	Liriope giganteum 'Evergreen Giant'	Evergreen Giant Lily Turf	140mm	0.6 x 0.6m	TBC
Opj	Ophiopogon japonicus	Mondo Grass	140mm	0.3 x 0.6m	TBC
Pter	Pachysandra terminalis	Japanese Spurge	140mm	0.2 x 0.5m	TBC

GENERAL NOTE: These drawings have been prepared in accordance with relevant Queanbeyan-Palerang Regional Council standards and guidelines, unless indicated otherwise.

NOT FOR CONSTRUCTION

Copyright and property of Place Logic Pty Ltd - may be used only for the stated project and issue status, and in accordance with terms of engagement for which it was commissioned. To be read in conjunction with all relevant contracts, specifications, reports, drawings and development approval conditions - obtain any outstanding statutory approvals prior to commencement of works. Use figured dimensions - do not scale from drawings. Dimensions are in meters unless noted otherwise.
Place Logic acknowledges Aboriginal and Torres Strait Islander people as the traditional custodians of the land on which we work, and their continuing connection to culture, land and sea. We pay our respects to ancestors and elders past, present and emerging.

REV	DESCRIPTION	DATE	DWN	CHK
A	FOR APPROVAL	30.11.23	EC/HS	AJ
B	FOR APPROVAL	13.12.23	EC/HS	AJ

CLIENT



Urban Design | Landscape Architecture
www.placelogic.com.au
ABN 25 619 179 743

PLANTING PALETTE AND SCHEDULES

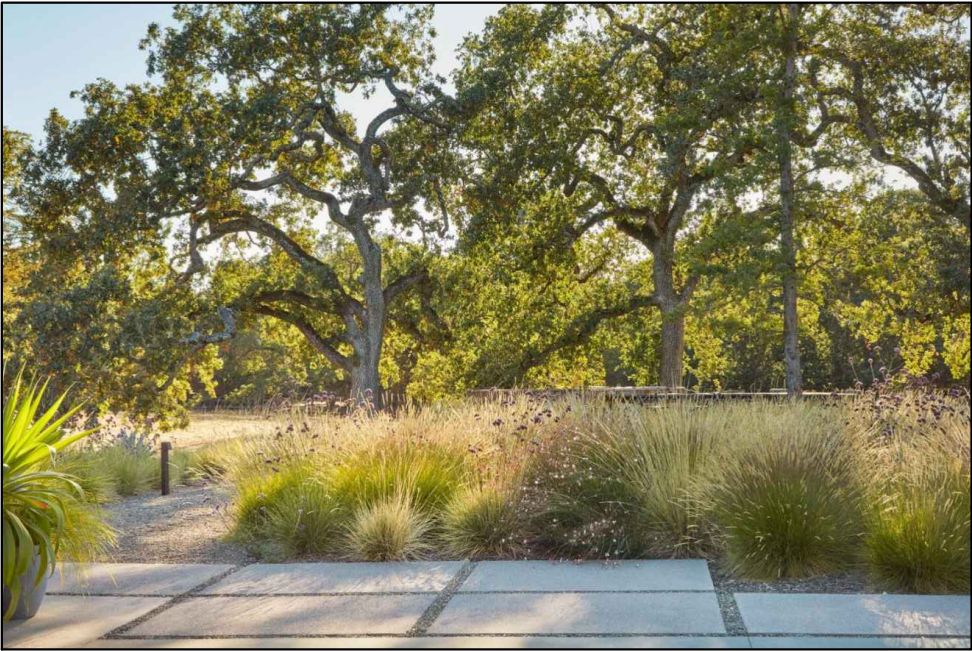
PROJECT

[23-454] Vikings Jerrabomberra
37 Tompsitt Drive, Jerrabomberra NSW

ISSUE FOR APPROVAL

REV. B

L303.2



TREES					
ID	Botanical Name	Common name	Pot Size	HxW	Quantity
ACro	Acer rubrum 'October Glory'	October Glory Maple	100L	11 x 8m	8
BRp	Brachychiton populneus	Kurrajong Bottle Tree	100L	10 x 10m	1
Ebl	Eucalyptus blakelyi	Blakely's Red Gum	100L	25 x 20m	4
PNV	Pyrus nivalis	Snow Pear	100L	8 x 5m	2
Emfl	Eucalyptus mannifera 'Little Spotty'	Dwarf Red Spotted Gum	100L	5 x 5m	9

SHRUBS					
ID	Botanical Name	Common name	Pot Size	HxW	Quantity
ApLN	Acacia pravissima 'Little Nugget'	Dwarf Ovens Wattle	140mm	1.2 x 1m	TBC
CRd	Correa decumbens	Spreading Correa	140mm	0.3 x 1.5m	TBC
INu	Indigofera australis	Australian Indigo	200mm	2 x 2m	TBC
LBsn	Leucophyta brownii 'Silver Nugget'	Cushion Bush	200mm	1.0 x 1.0m	TBC
Wfa	Westringia fruticosa 'Aussie Box'	Coastal Rosemary	200mm	1 x 1m	TBC

GRASSES & STRAPPY LEAF					
ID	Botanical Name	Common name	Pot Size	HxW	Quantity
Abbr	Anigozanthos 'Big Red'	Red Kangaroo Paw	140mm	0.6 x 1.0m	TBC
Llt	Lomandra longifolia 'Tanika'	Tanika Mat Rush	140mm	0.5 x 0.6m	TBC
POAs	Poa sieberiana 'Aranda'	Grey Tussock Grass	140mm	0.3 x 0.4m	TBC
Pola	Poa labillardieri	Tussock Grass	140mm	0.8 x 0.6m	TBC
Fln	Ficinia nodosa	Club Rush	200mm	1 x 1m	TBC

GROUNDCOVER					
ID	Botanical Name	Common name	Pot Size	HxW	Quantity
BNrc	Banksia integrifolia 'Roller Coaster'	Roller Coaster Banksia	140mm	0.4 x 4m	TBC
Hvi	Hardenbergia violacea	Purple Coral Pea	140mm	3 x 2m	TBC
My pb	Myoporum parvifolium 'Broadleaf'	Creeping Boobialla	140mm	0.1 x 1.0m	TBC



TREES					
ID	Botanical Name	Common name	Pot Size	HxW	Quantity
LME	Lemon 'Meyer'	Meyer's Lemon	200mm	2 x 2m	TBC
CIH	Citrus hystrix	Kaffir Lime	100L	2 x 1.5m	TBC
Fmn	Fortunella margarita 'Nagami'	Nagami Kumquat	200mm	1 x 1.2m	TBC
Lmt	Lime 'Tahitian'	Tahitian Lime Tree	200mm	3 x 3m	TBC
LRn	Laurus nobilis	Bay Tree	140mm	7 x 3m	8
Pug	Punica granatum	Pomegranate	100L	3.0 x 3.0m	TBC

HERBS					
ID	Botanical Name	Common name	Pot Size	HxW	Quantity
CBc	Cymbopogon citratus	Lemongrass	140mm	1.5 x 0.9m	TBC
FS	Feijoa sellowiana	Feijoa	140mm	4 x 4m	TBC
Lavs	Lavandula stochas	French Lavender	140mm	0.7 x 0.7m	TBC
OV	Origanum vulgare	Oregano	140mm	0.3 x 0.5m	TBC
Rbl	Rosmarinus officinalis 'Blue Lagoon'	Blue Lagoon	140mm	1.0 x 1.0m	TBC
SO	Salvia officinalis	Sage	140mm	0.8 x 1m	TBC
TS	Thymus spp.	Common Thyme	140mm	0.3 x 0.3m	TBC

CLIMBING					
ID	Botanical Name	Common name	Pot Size	HxW	Quantity
Pae	Passiflora edulis	Passionfruit	140mm	1 x 3m	TBC
Vtc	Vitis coignetiae	Ornamental Grape	200mm	15 x 6m	TBC



TREES					
ID	Botanical Name	Common name	Pot Size	HxW	Quantity
GLco	Gleditsia tricanthos var. inermis 'Continental'	Continental Honey Locust	100L	9 x 5m	27

SHRUBS					
ID	Botanical Name	Common name	Pot Size	HxW	Quantity
Cvs	Callistemon viminalis 'Slim'	Slim Bottlebrush	33cm	3.0 x 1.3m	TBC
ApLN	Acacia pravissima 'Little Nugget'	Dwarf Ovens Wattle	140mm	1.2 x 1m	TBC

GRASSES AND STRAPPY LEAF PLANTS					
ID	Botanical Name	Common name	Pot Size	HxW	Quantity
Ln	Lomandra 'Nyalla'	Nyalla Lomandra	140mm	0.9 x 0.9m	TBC

GENERAL NOTE: These drawings have been prepared in accordance with relevant Queanbeyan-Palerang Regional Council standards and guidelines, unless indicated otherwise.

NOT FOR CONSTRUCTION

REV	DESCRIPTION	DATE	DWN	CHK
A	FOR APPROVAL	30.11.23	EC/HS	AJ
B	FOR APPROVAL	03.02.25	EC	AJ

CLIENT



www.placelogic.com.au
ABN 25 619 179 743

PLANTING PALETTE AND SCHEDULES

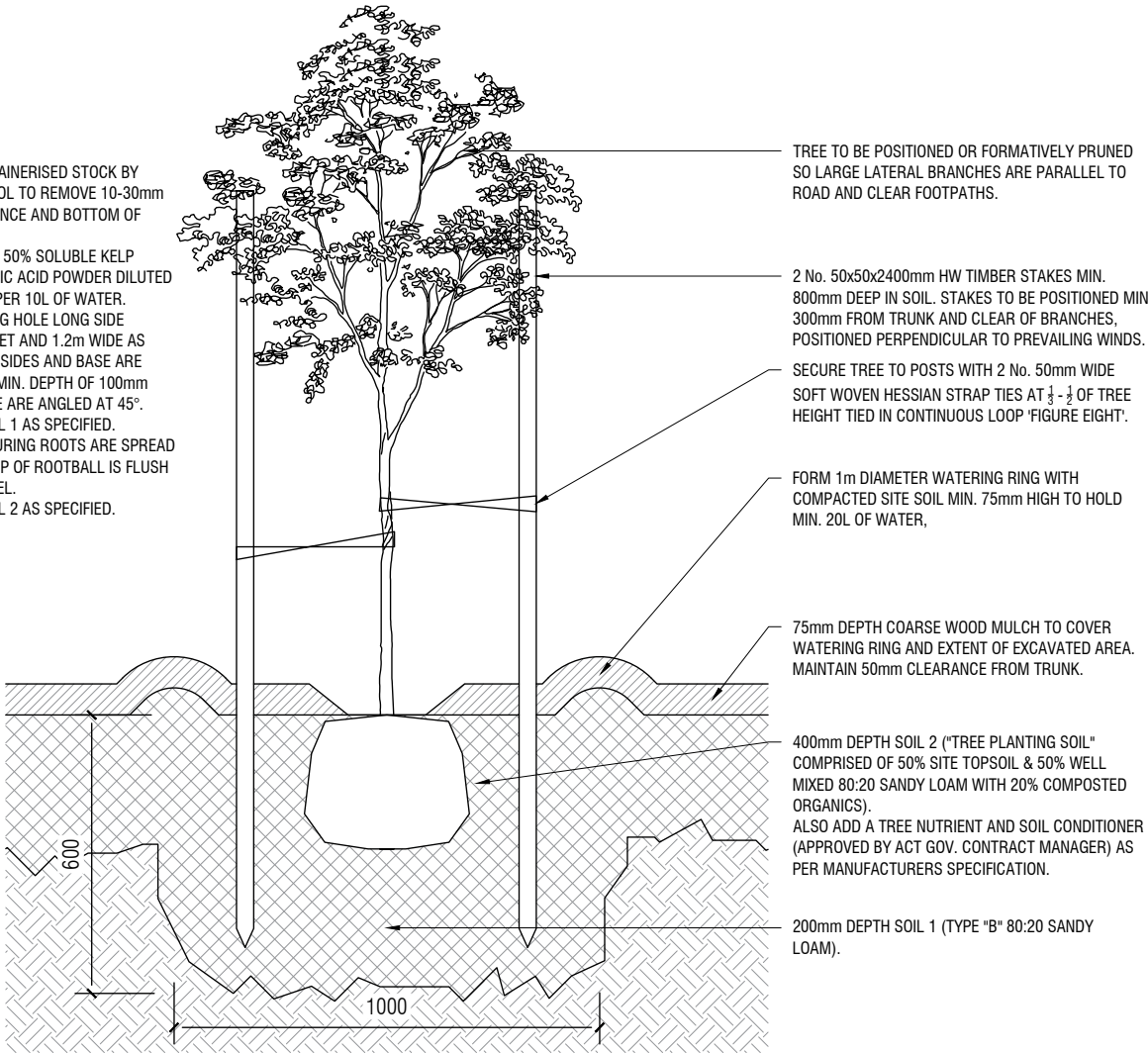
PROJECT
[23-454] Vikings Jerrabomberra
37 Tompsitt Drive, Jerrabomberra NSW

ISSUE FOR APPROVAL
REV. B

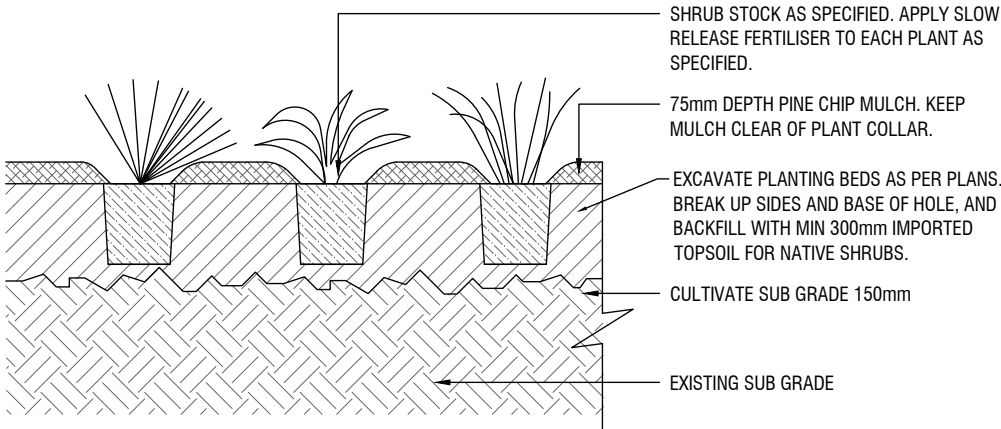
L303.3

PLANTING NOTES:

1. ROOT PRUNE CONTAINERISED STOCK BY USING A SHARP TOOL TO REMOVE 10-30mm FROM CIRCUMFERENCE AND BOTTOM OF ROOTBALL.
2. SOAK ROOTBALL IN 50% SOLUBLE KELP EXTRACT 50% FULVIC ACID POWDER DILUTED AT 1:1000. IE. 10g PER 10L OF WATER.
3. EXCAVATE PLANTING HOLE LONG SIDE PARALLEL TO STREET AND 1.2m WIDE AS DETAILED. ENSURE SIDES AND BASE ARE BROKEN OUT TO A MIN. DEPTH OF 100mm AND SIDES OF HOLE ARE ANGLED AT 45°.
4. BACKFILL WITH SOIL 1 AS SPECIFIED.
5. INSTALL TREE ENSURING ROOTS ARE SPREAD Laterally and TOP OF ROOTBALL IS FLUSH WITH GROUND LEVEL.
6. BACKFILL WITH SOIL 2 AS SPECIFIED.



TYPICAL TREE PLANTING DETAIL - NTS



TYPICAL SOFT PLANTING DETAIL NTS

GENERAL NOTE: These drawings have been prepared in accordance with relevant Queanbeyan-Palerang Regional Council standards and guidelines, unless indicated otherwise.

NOT FOR CONSTRUCTION

Copyright and property of Place Logic Pty Ltd - may be used only for the stated project and issue status, and in accordance with terms of engagement for which it was commissioned. To be read in conjunction with all relevant contracts, specifications, reports, drawings and development approval conditions - obtain any outstanding statutory approvals prior to commencement of works. Use figured dimensions - do not scale from drawings. Dimensions are in meters unless noted otherwise.

Place Logic acknowledges Aboriginal and Torres Strait Islander people as the traditional custodians of the land on which we work, and their continuing connection to culture, land and sea. We pay our respects to ancestors and elders past, present and emerging.

REV	DESCRIPTION	DATE	DWN	CHK
A	FOR APPROVAL	13.12.23	EC/HS	AJ

CLIENT



Place Logic

Urban Design |
Landscape Architecture

www.placelogic.com.au
ABN 25 619 179 743

LANDSCAPE DETAILS

PROJECT

[23-454] Vikings Jerrabomberra
37 Tomsitt Drive, Jerrabomberra NSW

ISSUE FOR APPROVAL

REV. A

L304.1